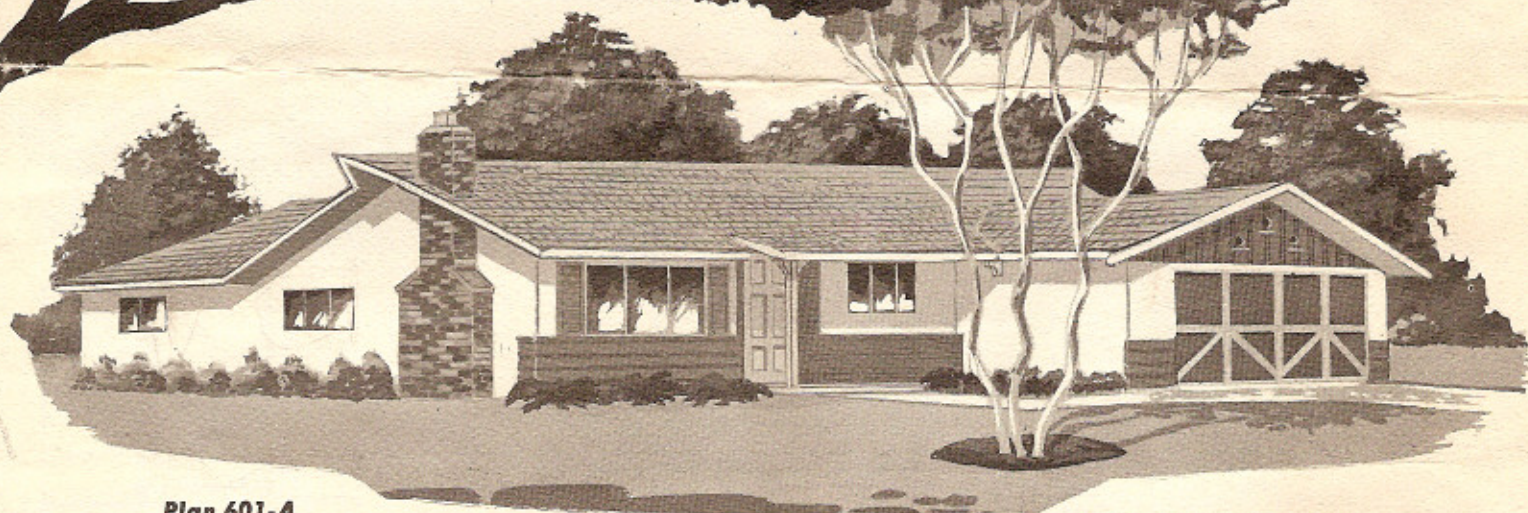


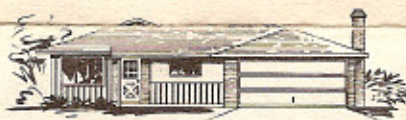
# Arlington Heights



Plan 601-A

## features

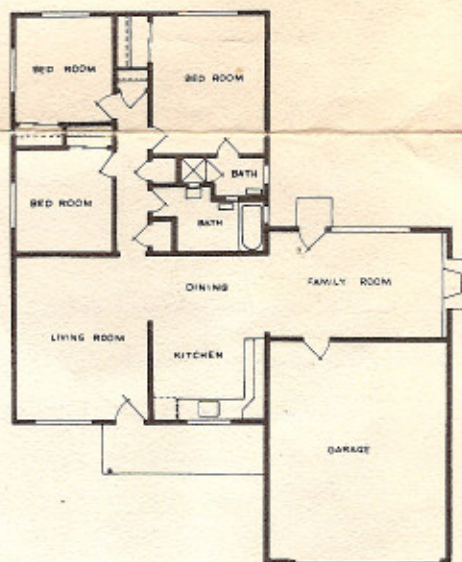
- 3 Bedrooms
- 2 Baths
- Separate family room with fireplace
- Built-in electric range and oven
- Rear yard fencing
- Landscaped
- Choice of interior colors
- 3 Elevations to choose from
- Conventional construction — hardwood floors
- Sewers installed — no assessments
- Fully formed counter tops
- Ceramic tile showers
- Forced air furnace



Plan 601-B

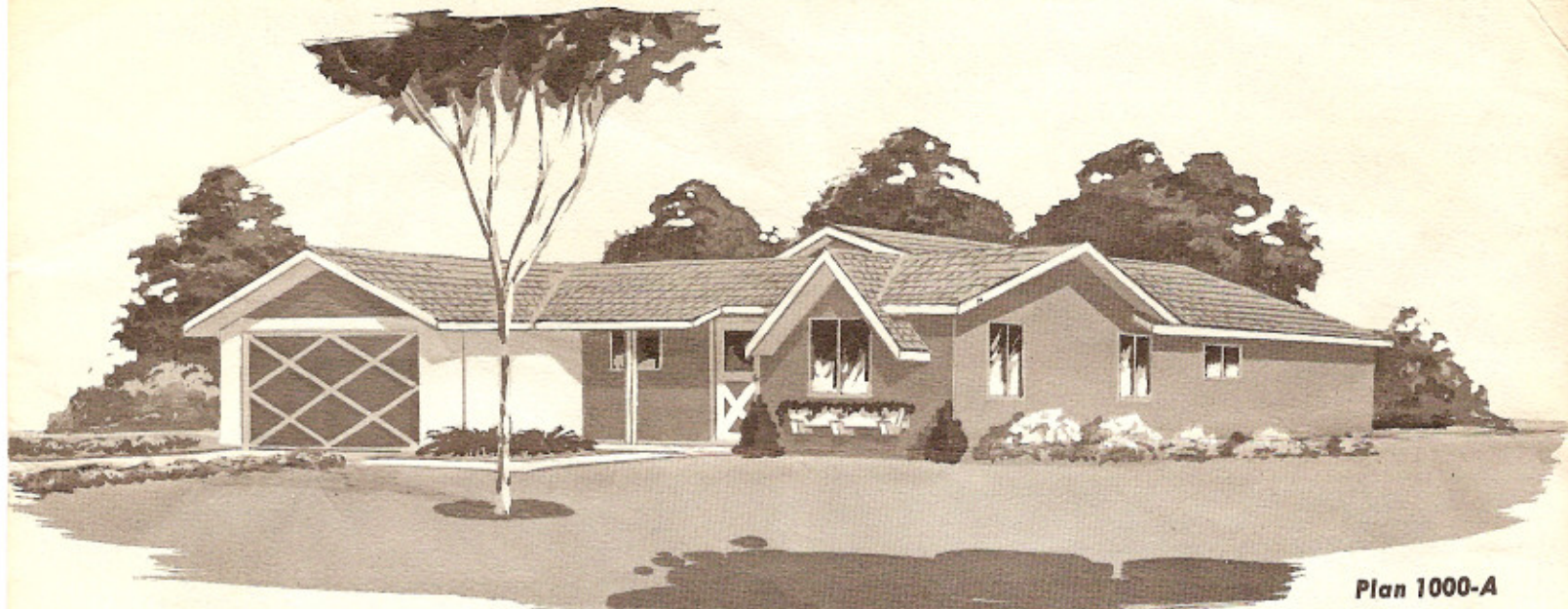


Plan 601-C



Yes, here at Arlington Heights is the home you have been waiting for at the price and terms you can afford. Now you can have all the charm of quiet, ranch-type living a mere 15 minutes from the heart of downtown Sacramento. Schools, shopping, everything close at hand. Compare feature for feature and you will agree that Arlington Heights is the outstanding buy in the area.

TOTAL PRICE	\$ _____
TERMS:	
Down Payment	\$ _____
Closing Costs	\$ _____
TOTAL	\$ _____
MONTHLY PAYMENT:	
Principal and Interest	\$ _____
Taxes and Insurance	\$ _____
TOTAL	\$ _____



Plan 1000-A

## features

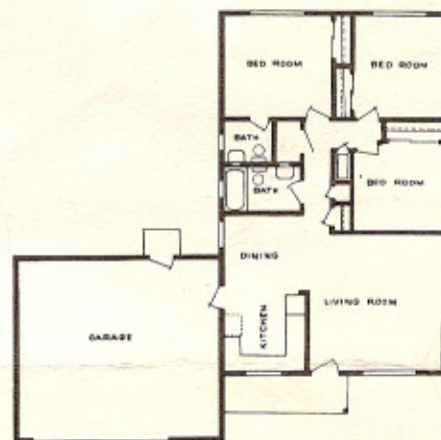
- 3 Bedrooms
- 1½ Baths
- Built-in electric range and oven
- Fenced rear yard
- Forced air heat
- Landscaped
- Choice of interior colors
- 3 Elevations to choose from
- Fully formed counter tops
- Sewers installed — no assessments
- Built-in range and oven



Plan 1000-B

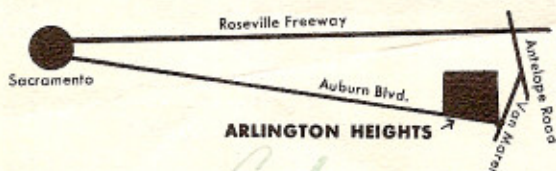


Plan 1000-C



Arlington Heights presents value-packed homes for value-wise people! Put in your reservation now!

TOTAL PRICE	\$ _____
TERMS:	
Down Payment	\$ _____
Closing Costs	\$ _____
TOTAL	\$ _____
MONTHLY PAYMENT:	
Principal and Interest	\$ _____
Taxes and Insurance	\$ _____
TOTAL	\$ _____



# Arlington Heights

**DIRECTIONS:** Drive out Roseville Freeway to Madison Ave. Turn right on Madison to Auburn Blvd. Turn left on Auburn (approx. 3 miles) to Arlington Heights model homes.

Phone ED 2-0280

By the builders of thousands of homes in Northern California  
AUBURN BOULEVARD • CITRUS HEIGHTS